

# PRESSURE REGULATOR

## MINI



**Compact pressure regulator for precise control of low flow rates.**  
**Extremely reliable by high manufacturing quality and 100% tested.**  
**Highest level of safety for Oxygen applications cause desingnet and cleaned for oxygen according to EIGA, CGA and AIGA.**

### Features

- applicable for
  - oxygen O<sub>2</sub>
  - hydrogen H<sub>2</sub>
  - methane CH<sub>4</sub>
  - propane C<sub>3</sub>H<sub>8</sub>
  - carbon dioxide CO<sub>2</sub>
  - mixtures from nitrogen/hydrogen N<sub>2</sub>/H<sub>2</sub>
  - other air gases
- lockable adjustment knob

### Perfect suited for

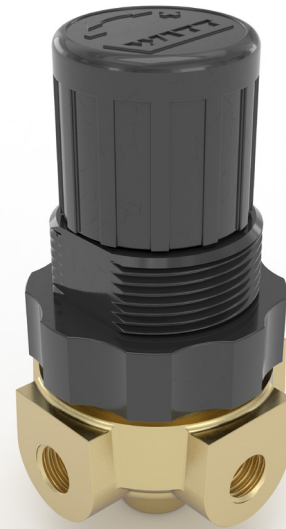
- analysis technology
- small burner systems
- sampling
- dosing
- use as pilot pressure regulator
- for installation in pipelines and panel mounting

### Option

- stainless steel version
- medical applications (FDA-approved elastomers available)
- pressure gauge included

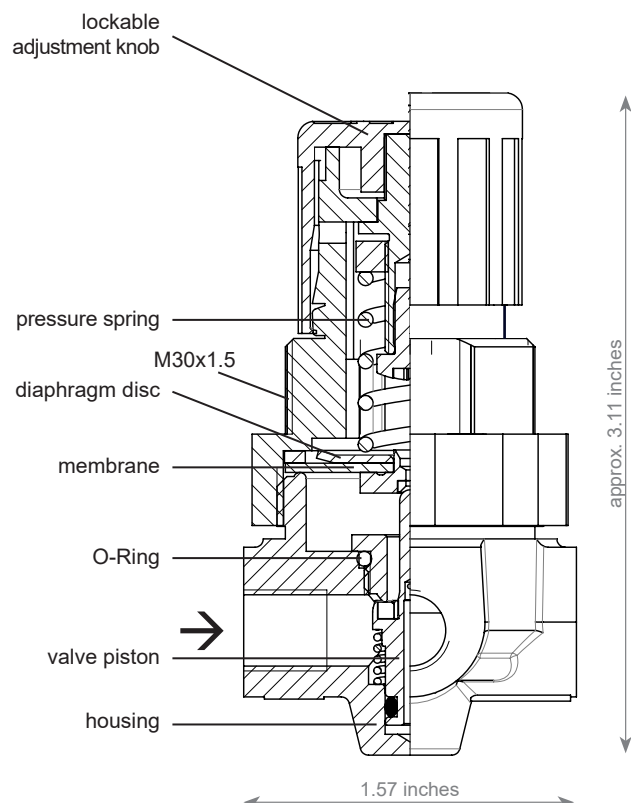
### Technical features

- brass
- spring-loaded diaphragm
- G 1/8" female connections
- maximum inlet pressure 363 PSI
- outlet pressure ranges  
7.25-44 PSI, 7.25-145 PSI, 7.25-232 PSI
- -22°F to +140°F
- designed for Oxygen Service in accordance with EIGA 13/20, CGA G-4.4 and AIGA 021/20: Oxygen Pipeline and Piping Systems
- cleaned for Oxygen Service in accordance with EIGA 33/18, CGA G-4.1 and AIGA 012/19: Cleaning of Equipment for Oxygen Service
- version in "relieving" and "non-relieving" selectable



Company certified according to ISO 9001, ISO 22000 and PED 2014/68/EU Module H.

ATEX 2014/34/EU with ignition hazard analysis according to EN 1127-1, DIN EN 13463-1 and ZH1/200.



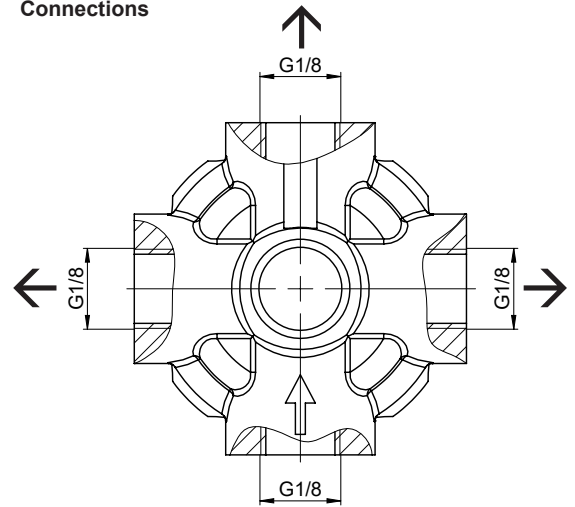
# PRESSURE REGULATOR

## MINI



	Versions	
	relieving	non-relieving
<b>Gas</b>	max. inlet pressure [PSI]	
Argon (Ar)	363	363
Helium (He)	363	363
Natural gas (M)	–	363
LPG (P)	–	363
Hydrogen (H)	–	363
Nitrogen (N)	363	363
Carbon dioxide (CO <sub>2</sub> )	363	363
Oxygen (O)	363	363
Compressed air (D)	363	363
<b>Outlet pressure</b>	Order-No.	
7.25 - 232 PSI	MINI 16	277-001G 277-004G
7.25 - 145 PSI	MINI 10	277-002G 277-005G
7.25 - 44 PSI	MINI 3	277-003G 277-006G
<b>Connections</b>	G 1/8 F	
<b>Screw plug</b>	800.003300	
<b>Seal kit</b>	956.514400	
<b>Nut (panel mounting)</b>	803.067200	
<b>Explosion protection ATEX</b>	Ⓔ II 2G Ex h IIC T6 Gb	
<b>Temperature range</b>	-22°F up to +140°F	
<b>Material</b>	housing – brass diaphragm disc - stainless steel (1.4305) membrane - CR (O <sub>2</sub> tested) O-Ring - 72 NBR valve piston - brass springs - stainless steel (1.4310)	
<b>Weight</b>	7.41 oz	

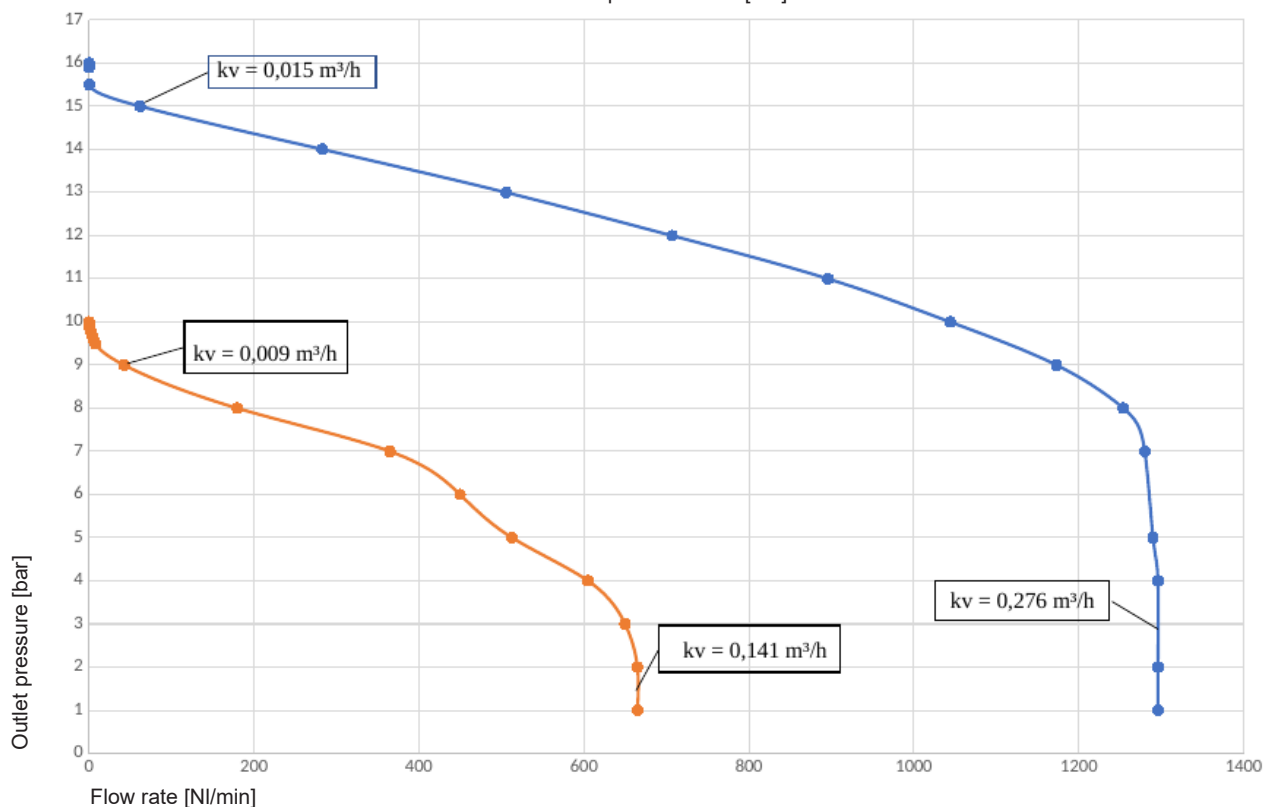
Connections



### MINI 16 – 7.25 - 232 PSI (flow rate nitrogen, 68°F)

277-001G

Inlet pressure = 20 [bar]

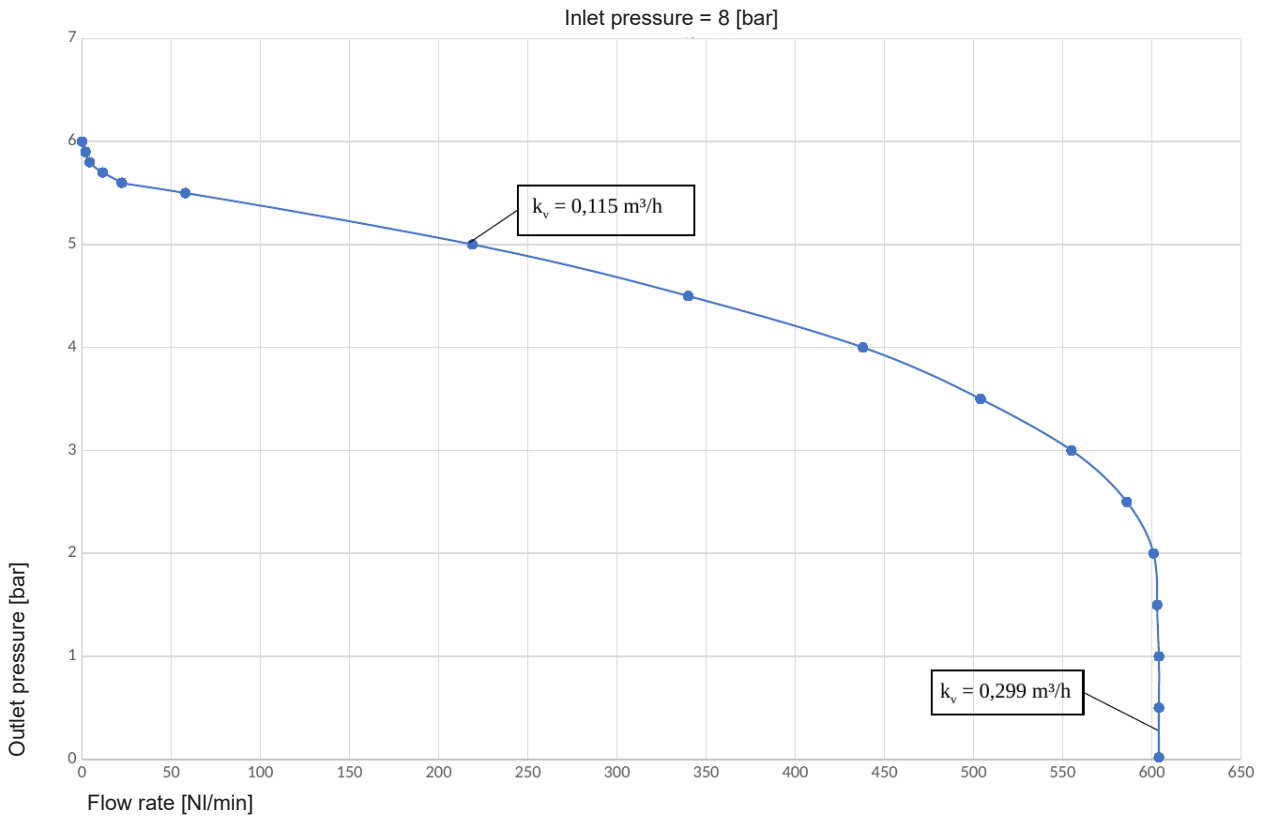


# PRESSURE REGULATOR

## MINI



**MINI 10 – 7.25 - 145 PSI (flow rate nitrogen, 68°F)**  
277-002G



**MINI 3 – 7.25 - 44 PSI (flow rate nitrogen, 68°F)**  
277-003G

