

AUTOMATIC QUICK ACTING SHUT-OFF DEVICE

HDS17



WITT Automatic Quick Acting Shut-Off Devices (slam shut valves) for reliable protection against dangerous decomposition of acetylene in high pressure pipelines in accordance to EN ISO 14114.

Every Arrestor 100% tested.



The best Automatic Quick Acting Shut-Off Devices in the world

- a pressure sensitive piston valve stops explosive decomposition of acetylene
- immediately cuts off the gas supply in case of decomposition of acetylene

Operation / Usage

- as an Automatic Quick Acting Shut-Off Device according to EN ISO 14114 in high pressure pipelines, which are immediately supplied by more than six cylinders
- WITT Automatic Quick Acting Shut-Off Devices may be mounted in any position / orientation

- the maximum ambient / working temperature is 60 °C / 140 °F

Maintenance

- it is recommended that an annual body leakage test is performed
- Automatic Quick Acting Shut-Off Devices are only to be serviced by the manufacturer

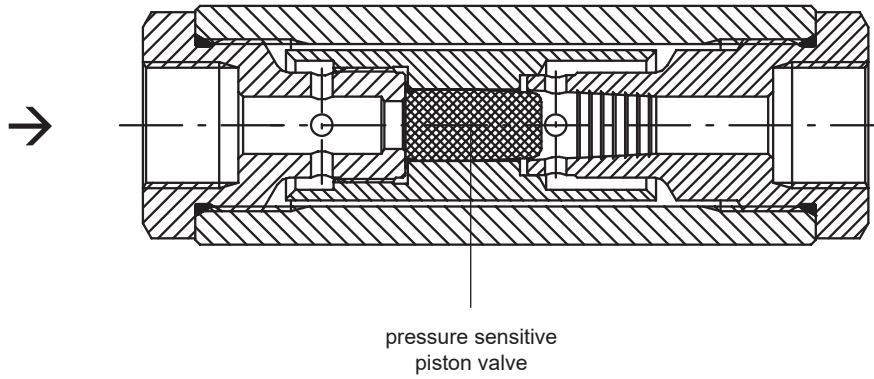
Approvals

Manufactured in accordance to EN ISO 15615
Company certified according to ISO 9001

Model	Max. working pressure [bar]	Materials	Weight [g]	Connection [inch]	Order-No.
HDS17 BAM/ZBF/004/15	Acetylene (A) 25.0	Aluminium / galvanised steel, chromed, Elastomer	1 797	G 3/4 RH	017-001

Other connections available upon request

AUTOMATIC QUICK ACTING SHUT-OFF DEVICE HDS17



HDS17

