

# SAFETY RELIEF VALVE SV805 SMART

## 0.5 up to 45.0 bar / with smart feature



SV805 smart



SV805-ES smart

Spring loaded, direct acting safety relief valve for venting excess pressure from vessels, pipelines and other equipment, combined with high-tech sensors and electronic components.

The safety relief valve SV805 Smart indicates via a red/green diode, which signals its status: open or closed. The signal is then transmitted to a control system. Open/closed status is communicated in real-time. This is key contribution to accident prevention and process monitoring.

### Features of safety relief valve SV805

- according to PED 2014/68/EU, category IV, Module B and D
- individual opening pressure
- TÜV-certification of pressure setting
- available in brass or stainless steel (ES)
- sealing material to suit gas or customer request
- compact size for easy, problem free installation
- range of inlet connections

### Smart Features

- optical display of status „open“ or „closed“ via a red/green diode directly at the valve
- digital signal via a NPN / PNP open collector signal, for transmission to a control system

### Approvals

Manufactured and certified according to EN ISO 4126-1

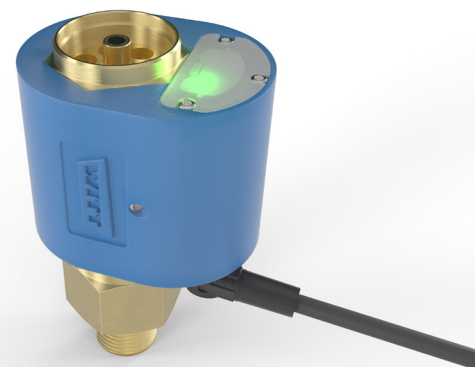
Company certified according to ISO 9001 and PED 2014/68/EU Module H

CE-marked according to PED 2014/68/EU

The protected system must not exceed category III

Designed for Oxygen Service in accordance with EIGA 13/20 and CGA G-4.4: Oxygen Pipeline and Piping Systems

Cleaned for Oxygen Service in accordance with EIGA 33/18 and CGA G-4.1: Cleaning of Equipment for Oxygen Service

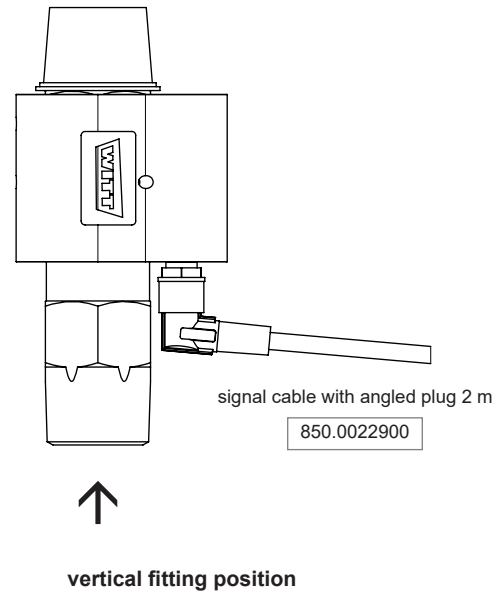


Display „closed“

# SAFETY RELIEF VALVE SV805 SMART

## Technical data

	SV805 smart
Opening pressure	from 0.5 up to 45.0 bar
Gases	Non-flammable gases including O <sub>2</sub> Flammable gases outside Ex Zone
Wetted materials	housing and metal turned parts made of brass or stainless steel, pressure spring made of stainless steel, valve seal material depending on gas
Width across flats	27 mm
Weight	approx. 260 g
Marking	CE0045
Drill hole (d <sub>0</sub> )	6.0 mm at 0.5 up to 25.0 bar 6.5 mm at > 25.0 up to 45.0 bar
Temperature range	-30 °C/-22 °F up to +60 °C/+140 °F (in accordance to gas and valve sealing)
Power supply	24 V DC
Protection class	IP 54
Parameters	open / closed
Interface	M8, 4-pin plug
Digital output	NPN / PNP open Collector
Adapter	for connection to ventilation pipe at the outlet



### Flow capacity for air at 23 °C / 73.4 °F (valid only for atmospheric back pressure)

Opening pressure	[bar]	0.5	1	2	3	4	5	6	7	8	9	10	11
Volume flow	[m <sup>3</sup> /h]	14.1	18.9	32.1	40.5	72.5	78.2	91.4	104.6	117.9	131.1	154	168.1
Opening pressure	[bar]	12	13	14	15	16	17	18	19	20	21	22	23
Volume flow	[m <sup>3</sup> /h]	182.2	196.3	210.4	224.5	238.6	252.8	246	259	272	285.1	298.1	311.1
Opening pressure	[bar]	24	25	26	27	28	29	30	31	32	33	34	35
Volume flow	[m <sup>3</sup> /h]	324.1	337.1	390	404.5	419	433.5	448	462.5	477	491.4	505.9	520.4
Opening pressure	[bar]	36	37	38	39	40	41	42	43	44	45		
Volume flow	[m <sup>3</sup> /h]	534.9	549.4	563.9	578.4	592.9	607.4	621.9	636.4	650.9	665.4		

Version	Burst pressure of housing	Overall length [mm]	Inlet male thread (M)	Outlet female thread (F)
Brass	400 bar	90	G 1/4; 1/4" NPT G 3/8; 3/8" NPT M16 x 1.5; M18 x 1.5	M24 x 1
		95	G 1/2; 1/2" NPT G 3/4; 3/4" NPT M20 x 1.5	
Stainless steel (ES) 1.4404 316L	600 bar	96.5	G 1/4; 1/4" NPT; 1/4" VCR G 3/8; 3/8" NPT; 3/8" VCR M16 x 1.5; M18 x 1.5	
		101.5	G 1/2; 1/2" NPT; 1/2" VCR G 3/4; 3/4" NPT M20 x 1.5	